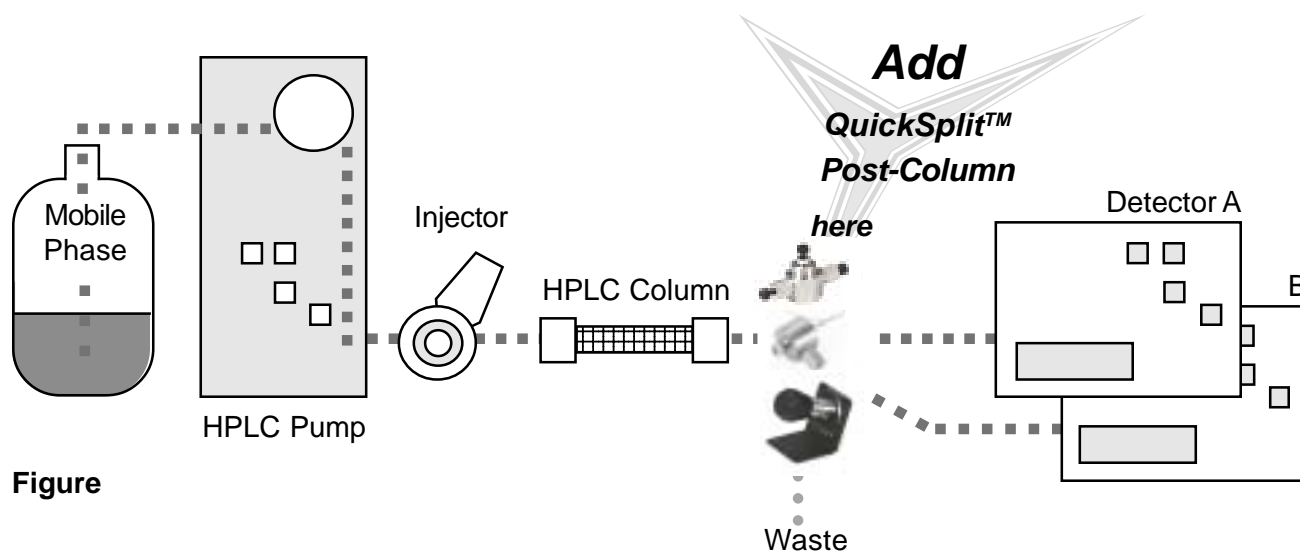


Post-Column Application Applies to single and multiple Detectors

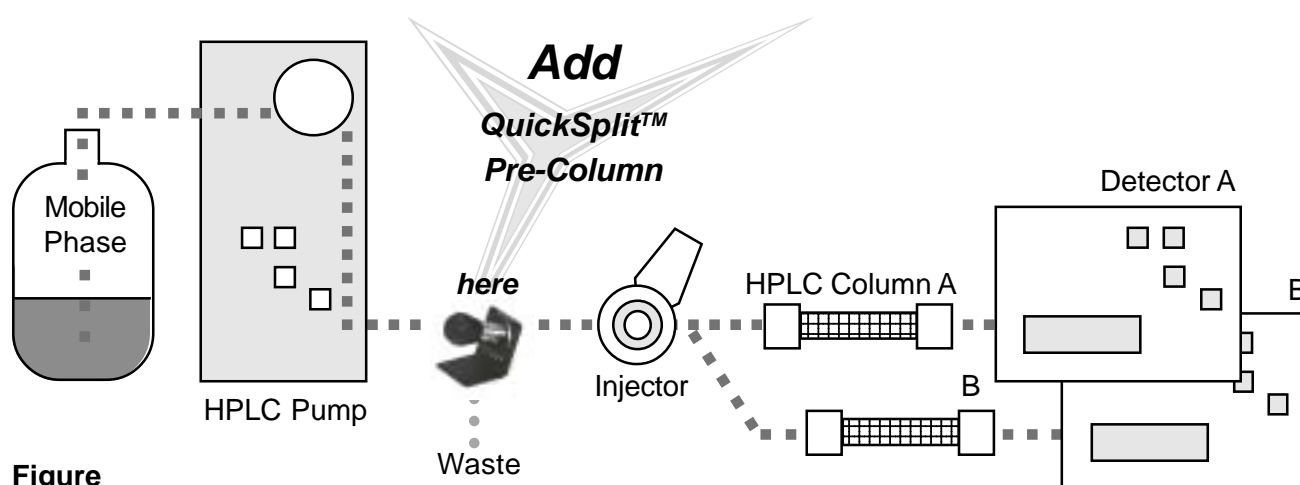
While **Figure below** does not cover all possible Post-Column Flow Splitter configurations, it depicts the most common application. Post-Column flow splitters specifications should be reviewed carefully in the subsequent product literature before selecting a splitter to order. If you have questions about which splitter is right for your application, please contact the technical support group at ASI.



Figure

Pre-Column Application Applies to single and multiple Columns

While **Figure below** does not cover all possible Pre-Column Flow Splitter configurations, it depicts the most common application. Pre-Column flow splitters specifications should be reviewed carefully in the subsequent product literature before selecting a splitter to order. If you have questions about which splitter is right for your application, please contact the technical support group at ASI.



Figure