

## Our Focus

### SCIENTISTS

When you use the best parts and components to keep your HPLC equipment running, you can meet your deadlines—and exceed your research goals.

### SERVICE REPAIR COMPANIES

Give your clients a higher level of equipment performance—by using high-quality HPLC parts and components every time.

### HPLC OEM's

Why invest in developing your own HPLC components when you can partner with industry experts who will consistently exceed your design and manufacturing standards?

*Quality Products Start  
with Quality Design*



## Other Products

- In-line Check Valves
- Syringe Pumps
- ASI HPLC and UHPLC Pumps
- ASI SFC Pumps
- ASI High Temperature Pumps
- PCR - Post-Column Reactor Modules
- Pulse Dampers
- Guard Column Hardware

Please visit [www.hplc-asi.com](http://www.hplc-asi.com)  
for more information

**ASI** Analytical Scientific Instruments US

Our high-spec products  
are designed for the most  
demanding customer—You.

[www.hplc-asi.com](http://www.hplc-asi.com)  
Richmond, California, USA

## About ASI

If you're looking for affordable off-the-shelf parts for your liquid chromatography equipment, don't settle for low quality. Analytical Scientific Instruments (ASI) uses engineering expertise and manufacturing excellence to deliver replacement parts that outperform Original Equipment Manufacturer (OEM) parts—giving you greater value for your money.

ASI manufactures high-pressure valves and components for the analytical chemistry market—especially in the area of liquid chromatography. Whether you're an original equipment manufacturer (OEM), distributor, or end user, we'll apply our design and manufacturing expertise to meet your needs—on time, every time. And if you also need components that are custom-engineered to address your most pressing challenges with the utmost reliability and performance, we've got you covered.



## Looking for new ways to beat deadlines and exceed expectations? So are we.

We engineer success into our products so that you can deliver faster without sacrificing quality.

### Some of Our Popular Products

#### QuickSplit™ Flow Splitters for Mass Spectrometry

- Adjustable / Fixed
- Stable Flow Tuning
- Multiple Detectors & Fraction Collection

#### Static Mixers

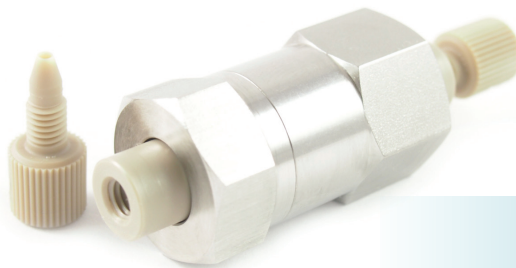
ASI manufactures a wide range of Static Mixers to solve the most demanding high pressure mixing problems.

- Low Volume
- 500 nL-15 mL
- Proprietary Design

#### HPLC/UHPLC Precolumn Filters

Provide economical protection from the harmful effects of sample and mobile phase particulates on modern UHPLC and other high resolution HPLC columns.

- Economical protection against micro-particles



- Cost effective way to extend column lifetime
- Universal fit, connects directly to column

#### Pump Replacement Parts

- Designed to deliver superior flow stability and accuracy
- Check Valves will not crush, crack or leak due to HP.
- Acetonitrile-resistant Valves also available
- High quality surface finish Pistons
- Seals are designed for long life, and optimum performance

