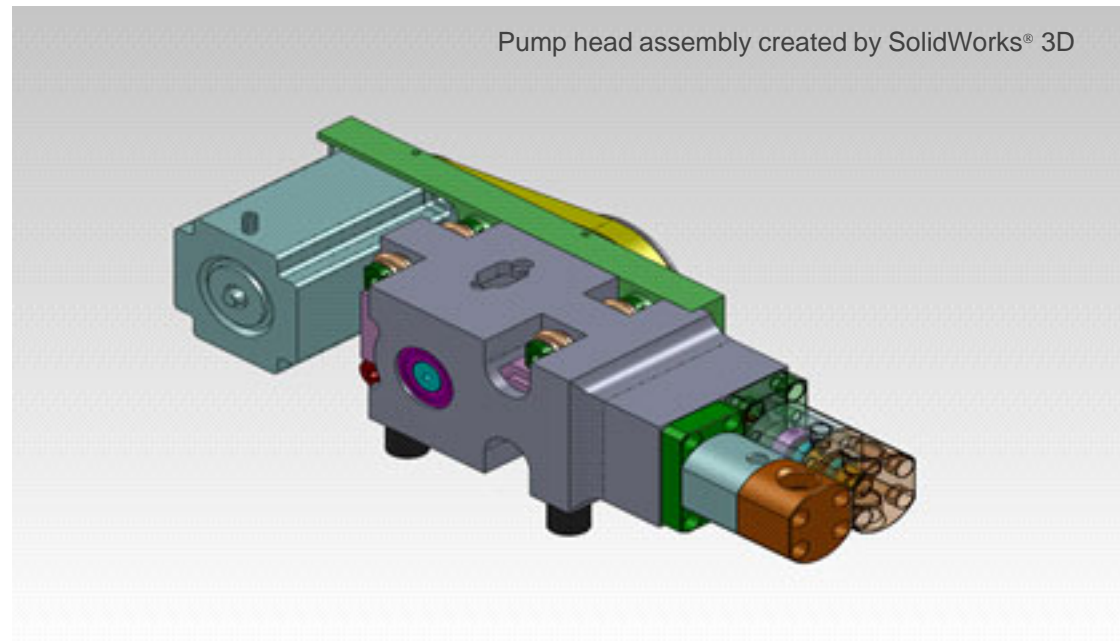


Model 520 HPLC Pumps



OEM inquiries are welcome

We are pleased to announce that all ASI500 series pumps are now supported by DataApex's Clarity 6.0 chromatography software!

Clarity will acquire, analyze and manage data from any analog output LC, GC or peripheral— four instruments with 12 detectors max.

The Clarity LC Module provides digital control for 400+ chromatographic devices and related peripherals.

Finally, Clarity is FDA 21 CFR part 11 compliant.

Analytical Scientific Instruments US, Inc.
3023 Research Drive Richmond CA 94806 USA
www.hplc-asi.com
Ph:800-344-4340
Customer Service: info@hplc-asi.com

Copyright © 2014 ASI - Analytical Scientific Instruments US, Inc.
Rev.5_27_2015

- Designed with the chromatographer in mind
- Reliable, Low Cost Solution
- Isocratic or Gradient systems
- NEW Digital Software Control via DataApex Clarity 6.0!



ASI520 Series HPLC Pump Features

- ❖ **Self-priming Pump Head**
Integral prime/purge
Rapid solvent changes
Pump primes itself — any solvent, any flow rate!
- ❖ **Patented Floating Pump Seal**
Seal floats in *alignment* relative to piston
- ❖ **Micro, Analytical, Semi-Prep, and Prep pump heads available**
- ❖ **UHPLC analytical pump available**
- ❖ **Intuitive front panel control**
Monitor key parameters via alphanumeric keypad and 4-line x 20-character LCD display
Program and store up to 20 linkable methods of 20 program steps each, and max time/step of 650 minutes in 0.1 steps
- ❖ **Solvent Compressibility Compensation**
User can select from a library of 15 solvents
Fourteen additional user-configured solvents
- ❖ **Easy Maintenance**
All user serviceable components are accessed via the front panel
Cartridge seal design makes seal replacement easy

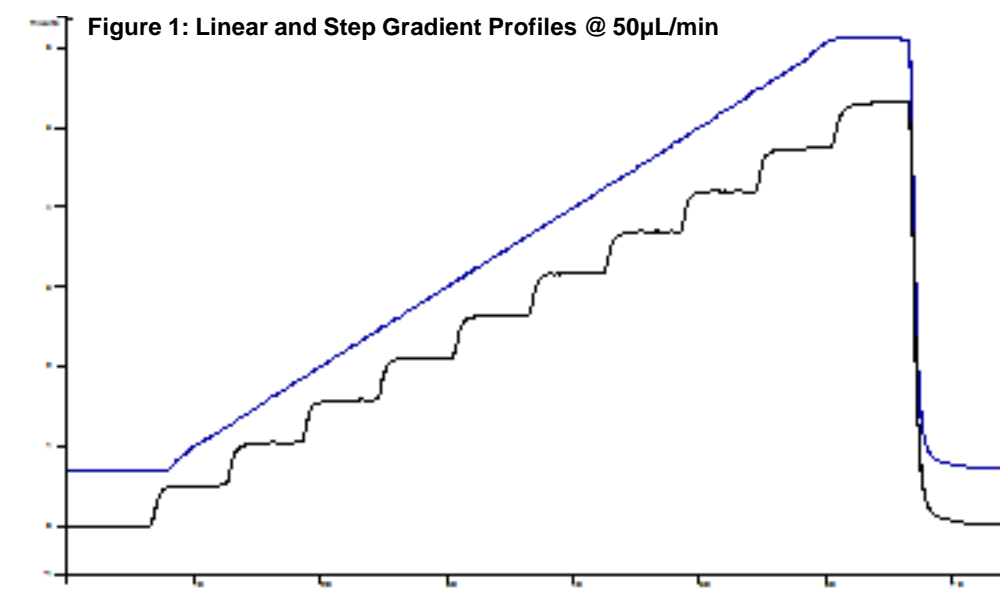
ASI Model 520 Pumps Specifications

Model	521	520*	520G*
Configuration	Isocratic	Isocratic or Gradient	Gradient System
Accuracy			
Micro:	±1% or 1 µL/min. (whichever greater)		
Other:	±1% or 2 µL/min. (whichever greater)		
Flow Range & Max Pressure			
Micro:	0.5 µL/min. - 4 mL/min.	7,000 PSI Max	
Analytical:	5.0 µL/min. - 10 mL/min.	7,000 PSI Max	
Analytical UHPLC:	5.0 µL/min. - 1 mL/min.	15,000 PSI Max	
	1 mL/min. - 10 mL/min.	7,000 PSI Max	
Semi – Prep:	10.0 µL/min. - 20 mL/min.	3,500 PSI Max	
Prep:	10.0 µL/min. - 125 mL/min.	1,500 PSI Max	
Precision			
Micro:	0.25%, 0.05 - 4 mL/min. @ 20°C		
Other:	0.25%, 0.10 - 10 mL/min. @ 20°C		
Pulsation			
1% Δ P/P @ 1,500 PSI pressure			
Dimension Weight			
10.25" (26cm) W x 14" (35.5cm) D x 6.5" (16.5cm) H, 16 lbs. (7.3Kg)			
Power			
85~264 VAC, 47~63 Hz, 60 W			

*Alphanumeric keypad programming control of gradient profiles with step and linear profiles at multiple levels. Store up to 20 linkable files with up to 20 program steps, and max time/step of 650 minutes in 0.1 steps. Remote control provided via external contact closure or RS-232. Concentration range setting: 0-100% in 1.0% steps.

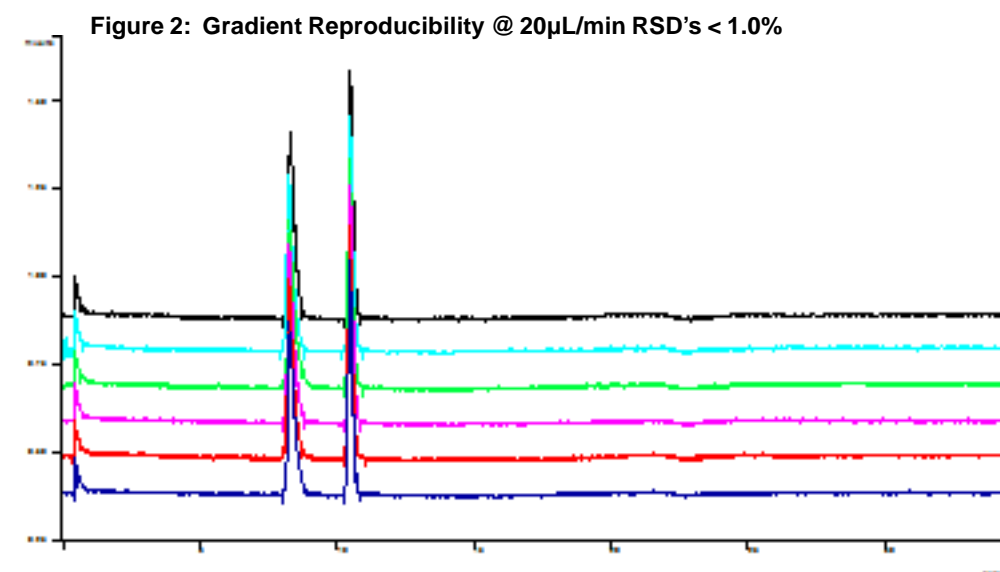
OEM inquiries are welcome

ASI Performance Data



HPLC System:
ASI Micro Head
Detection: UV214
Mixer: ASI HyperShear In-Line 25 µL

HPLC Conditions:
MP: A = H₂O, B = H₂O doped with 0.05% red dye
Flow Rate: 50µL/min
Step Gradient: 0 to 100% B in 60 min., 10% steps
Linear Gradient: Same, 4 min. T0 hold



HPLC System:
ASI Micro Head
Detection: UV214
Mixer: ASI HyperShear In-Line 25 µL

HPLC Conditions:
MP: A = H₂O, B = H₂O doped with 0.05% red dye
Flow Rate: 20µL/min Gradient: 5 to 95% B in 20 min
Sample: Methyl and Ethyl Parabens